

The Snail and the Whale

Flashcards, Mini-cards and matching cards



Learning language
through stories and
craft

**Kids
Club
English**
Sing, Play, Make, Learn

www.kidsclubenglish.com
www.facebook.com/storyclubenglish



Contents

1. Possible language focus	<u>p4</u>
2. Matching cards	
Activity suggestions	<u>p5</u>
- Matching cards	<u>p6-8</u>
- Card backs	<u>p9</u>
3. Mini-cards	
Activity suggestions	<u>p10</u>
- Picture mini-cards	<u>p11-12</u>
- Word mini-cards	<u>p13-14</u>
- Picture cards - card backs	<u>p15</u>
- Word cards - card backs	<u>p16</u>
4. Flashcards	
Activity suggestions	<u>p17</u>
- A5 Flashcards	<u>p18-40</u>
- A5 Flashcards card backs	<u>p41-42</u>
- A4 Flashcards	<u>p43-88</u>
- A4 Flashcards card backs	<u>p89-90</u>

Possible language focus

This pack is designed to complement the story 'The Snail and the Whale' by Julia Donaldson and Axel Scheffler. This story lends itself particularly well to focusing on **nature and landscape vocabulary**. However, there is a much wider variety of language practice that you could incorporate. For children learning English as a second language, it is useful to adapt the language of the story to help them internalise basic structures. See some suggestions below:

• Nature and landscape vocabulary:

whale	dock	trees	volcano
snail	harbour	sand dunes	bay
storm	mountains	icebergs	beach
wave	forest	savannah	island
lightning	jungle	night sky	rock
sea	rainforest	moon	coral
ocean	desert	stars	under the sea

• Animals that feature in the story:

snail, cat, seagull, fish, whale, penguin, seal, monkey, parrot, turtle, dolphin, octopus, shark, lobster, starfish, crab, bear, eagle, dog, cormorant

• Adapted story language:

<u>want to</u>	<u>can</u>	<u>feelings / emotion</u>
I want to see the world.	What can you see?	I'm cold.
We don't want to see the world.	I can see....	I'm hot.
Do you want to come with me?		I'm scared!
		I'm excited!

There is / are/ was /were

e.g. There is a whale. / There are dolphins. / There was an octopus. / There were icebergs.

• Craft/Game instructions and play:

Is it...? Yes it is. No, it isn't?

Where's the...? It's here. It's there.

Fold the paper. Turn it over. Fold it back.

Choose a colour. Choose a number. Choose an animal.

Roll the dice. Spin.

Colour ___(blue)

Can I have (the frog)? Can I have number (4)?

I'm finished. Can I have...? Yes, you can. Here you are. Thank you. You're welcome.

Can you see? I can see...

Where's the? Here it is. Over there. It's here.

It's my turn. It's your turn.

How many.....have you got? I've got.....

How many.....are there? There are/ There is.....

What is it? It's a... / What are they? They're

Possible language focus

This pack is designed to complement the story 'The Snail and the Whale' by Julia Donaldson and Axel Scheffler. This story lends itself particularly well to focusing on nature and landscape vocabulary resources. There is a main section of ready-to-use language prompts that you could incorporate into lessons learning English as a second language. It is suitable to adapt the language of the story to help them learn other basic 20 words. See some suggestions below:

Nature and landscape vocabulary:

whale	snail	volcano	island
storm	harbour	bay	beach
wave	mountains	icebergs	ocean
lightning	forest	savannah	moon
sea	jungle	rainforest	stars
ocean	desert	stars	under the sea

Animals that feature in the story:

snail, cat, seagull, fish, whale, penguin, seal, monkey, parrot, turtle, dolphin, octopus, shark, lobster, starfish, crab, bear, eagle, dog, kangaroo

Adapted story language:

snail to	cat	feelings / emotion
I want to see the world	What can you see?	I'm not
Do you want to see the world?	I can see...	I'm not
Do you want to come with me?	How	I'm excited!

There is / are / was / were

e.g. There is a whale. / There are dolphins. / There was an octopus. / There were kangaroos.

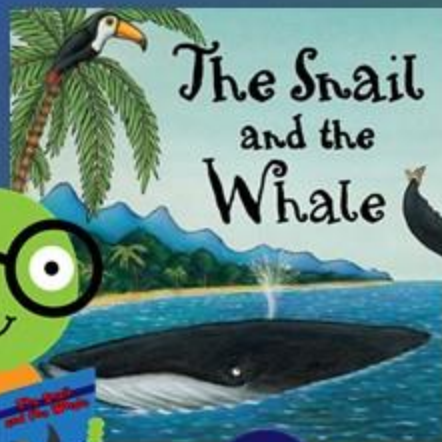
Craft/Some instructions and play:

cut out
glue
colour
write
draw

Can I have the frog? / Can I have the monkey?
If you have a cat, write 'I have a cat'.
Can you see... / What can you see... / Thank you, I've seen.
Can you see... / What can you see... / Thank you, I've seen.
What's that... / What is that... / It's a...
It's a... / It's a... / It's a...

How many... / How many... / How many...
What is it? / What is it? / What is it?

Possible language focus



The Snail and the Whale

Detailed activity suggestions

The Snail and the Whale matching

Activity suggestions:

These matching cards include the snail, the whale and featured

1.

Opening routine

For very young children, this can be a good way

1. Before your session, scatter or hide half of
2. When the children come in, offer them one out so the children can't see the pictures.
3. Challenge them to find the other half.
4. When they find the other half, they can say
5. After all the pairs have been found, follow

2.

Matching race

1. Make one set of matching cards for each of
2. Give each child a set of cards and challenge quickly as they can.

3.

Patience / Pairs

Use the cards as a memory matching game. Use

1. Place all the cards face down on the table
2. Each child takes a turn at turning over two
3. When one child finds a pair, they say that's
4. The children continue taking turns until all

For more ideas on games you can play, see

Adapt for



© Kids Club English 2018. All rights reserved.
www.kidsclubenglish.com

The Snail and the Whale FLASHCARDS

Depending on your setting and resources available, you could choose to print the A5 or A4 flashcard sets. Word flashcards are provided for children developing literacy skills. Optional card backs are available.

These flashcards focus on nature and natural landscape vocabulary that feature in the story:

- whale
- snail
- storm
- wave
- lightning
- sea
- ocean
- dock
- harbour
- mountains
- forest
- jungle
- rainforest
- desert
- trees
- sand dunes
- icebergs
- savannah
- night sky
- moon
- stars
- volcano
- bay
- beach
- island
- rock
- coral
- under the sea

The flashcards can be used in a number of ways:

- to present new language
- to drill new language
- to recycle language
- as visual prompts
- as tools for language games

If you are using them in conjunction with the story, you could:

1. Use them to present key language before the story telling.
2. Display them during the telling as visual prompts. This can help you tell the story in a more interactive way.
3. Use them after the story telling in games to consolidate new language.
4. Display them as prompts during a follow-up craft.

For more ideas on games you can play, see:

Adaptable games and activities for young language learners



© Kids Club English 2018. All rights reserved.
www.kidsclubenglish.com

The Snail and the Whale Mini-cards

and natural vocabulary. The vast majority of the items are

have been added, e.g., rainbow.

development, you may choose to print only pictures or the picture to reverse to avoid the children seeing through when the cards are used text while the word cards have black text.

and there's a huge variety of language you could practise – not

The Snail and the Whale matching cards

in

routine

ace

/ Pairs

try:

with picture or word at one side of the room.

children into a line (or lines for a team game) at the back of the

see to the last person (people in teams), e.g., 'It's a whale', 'It's a

pers it to the child in front of them, who in turn whispers it

own, until it reaches the first child.

at the front hears the phrase, they run forward and point to or

ture or word card.

whole group or in pairs.

has the cards and chooses one. They keep it secret.

then take turns guessing the card, e.g., 'Is it a jungle?', 'Have you

ture taking turns. Encourage complete short answers.

you can play, see:

Adaptable games and activities for young language learners

© Kids Club English 2018. All rights reserved.
www.kidsclubenglish.com

Links to story videos, songs and other resources on

www.kidsclubenglish.com



Flashcards - A4 + A5 images and words



Matching cards



It's the



night sky

It's a ...



volcano

It's a ...



whale

It's a ...



snail

There's



mountains

It's a ...



It's a ...

It's a ...



bay

It's an



island

It's a ...



storm

It's a ...



wave

It's a ...



jungle

It's a ...



It's a ...

It's a ...



rock

It's



under the sea

It's the



sea

It's a ...



dock

There're



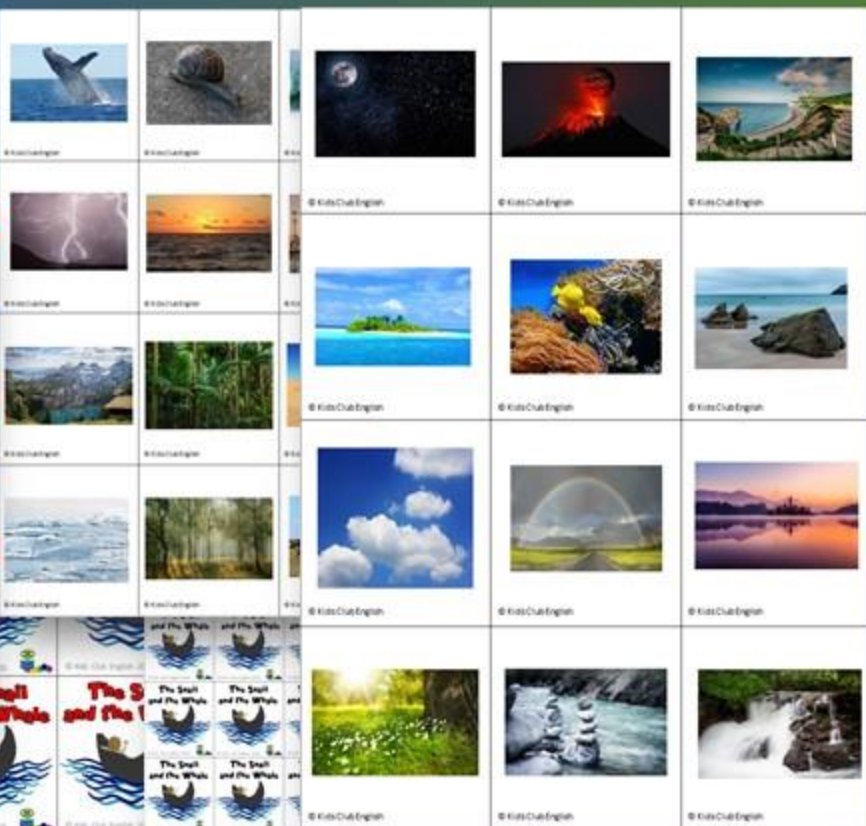
icebergs

It's the



It's the

Mini-cards



whale

snail

wave

storm

sea

dock

night sky

volcano

bay

desert

island

under the sea

rock

clouds

rainbow

lake

savannah

meadow

river

waterfall